

Manual de utilizare

Modul intrerupator cvadruplu cap scara – cap cruce
wireless cu touch Livolo – standard italian

C9-VL-FC4SR-3WP



Specificatii:

Modul intrerupator cvadruplu cap scara – cap cruce wireless cu atingere on/off – cu led albastru – cand intrerupatorul este stins si rosu – cand intrerupatorul este aprins, usor de folosit in intuneric, rezistent la zgarieturi, umiditate, mereu va arata impecabil. Potrivit pentru casa, birouri, restaurante, hoteluri, sali de conferinte.

Dimensiune modul: 65 x 39.5 x 25 mm

Consum propriu: mai putin de 0.1mW

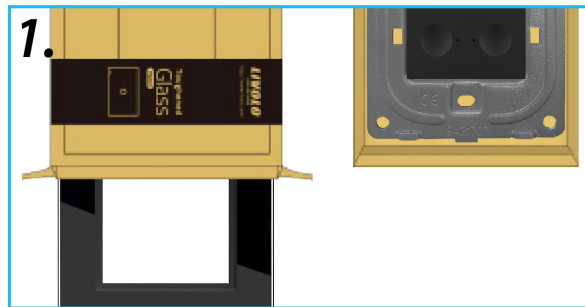
Tensiune maxima: 250 V

Curent maxim: 5A

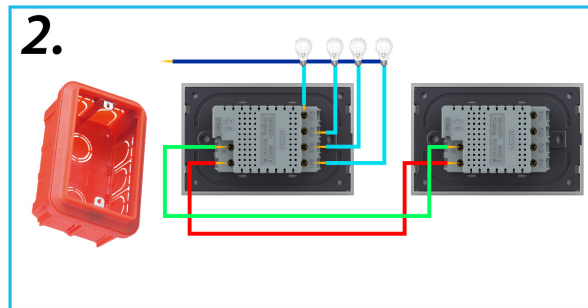
Mediu de operare: 30-70 grade Celsius, mai putin de 95% RH

Diagrama de instalare

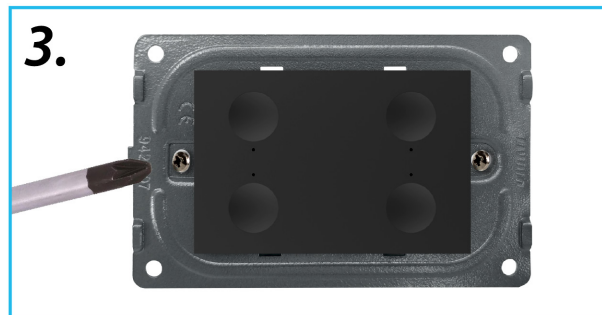
1. Deschide cutia si scoate produsele din interior!



2. Conecteaza firele conform schitei de instalare si strange suruburile!



3. Foloseste 2 suruburi pentru a fixa suportul!



4. Acopera panoul si conecteaza-l la energie electrica!



Poate fi actionat:

- Direct de la intrerupator on/off prin atingere;
- Din telecomanda Livolo, una din cele 2 modele:

Telecomanda tip breloc Livolo

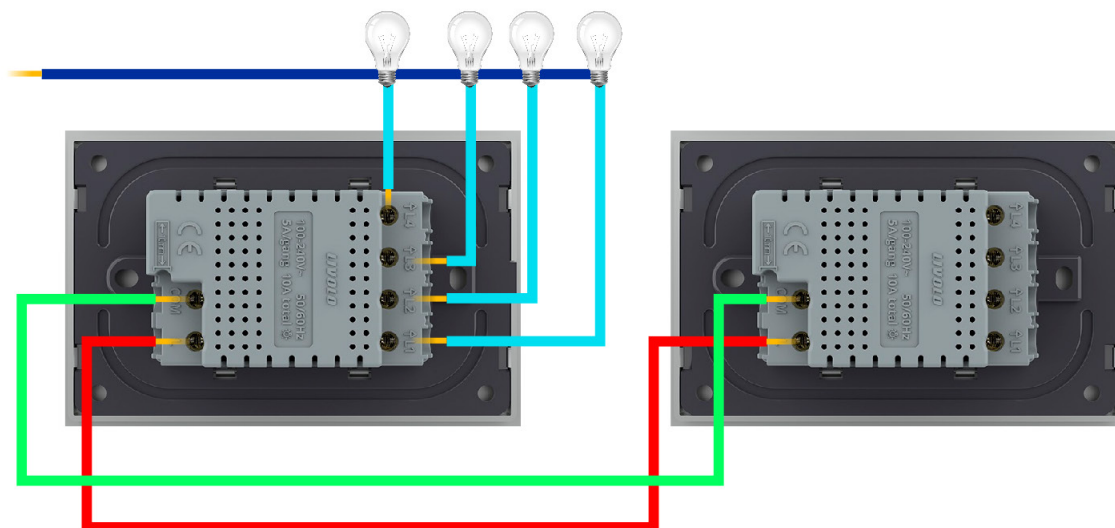
Telecomanda cu Touch Screen Livolo din sticla (telecomenzile se achizitioneaza separat).






VL-RMT-02



VL-RMT-04

Schema electrica

-  N – Cablu Nul
-  L – Cablu Fază
-  COM – Cap scară – cap cruce